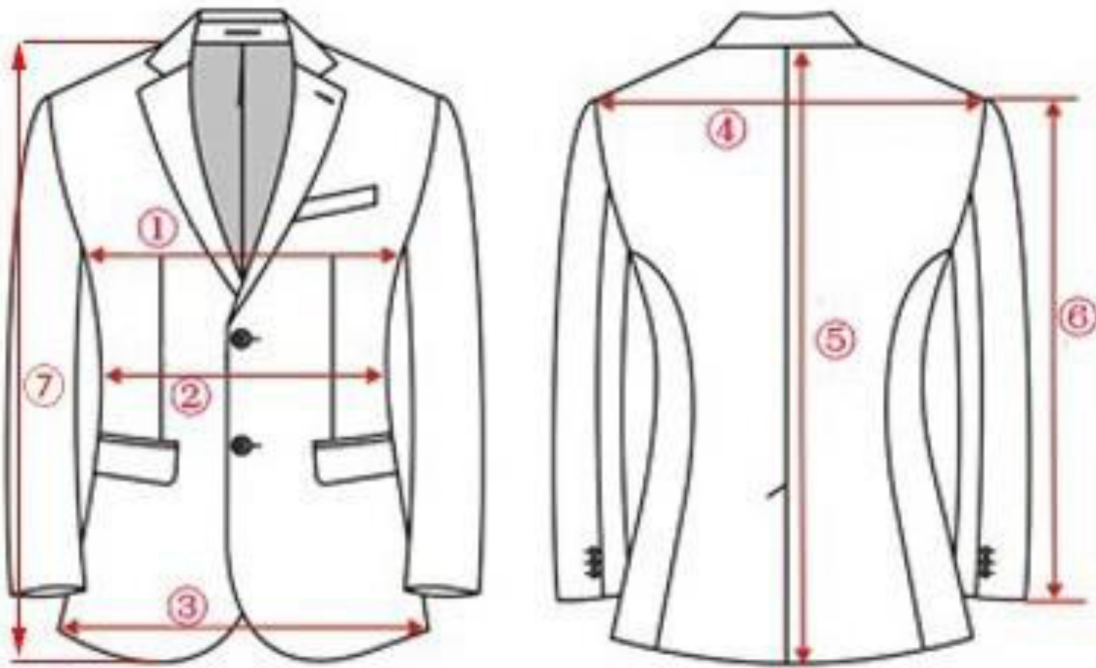


# MEASUREMENTS



- ① Bust /Chest
- ② Waist
- ③ Bottom Hem
- ⑦ Front length

- ④ Shoulder
- ⑤ Back length
- ⑥ Sleeve length

Please note that the chest measurement is the most important part of the blazer. Please add 2 inches to the chest and back length measurement to allow room for sweaters and growth. If you fall in between sizes then please choose the larger size.